

Phase One – 10 Question Quiz

1) How many of Whites pieces are attacking the Black Knight on d5? _____

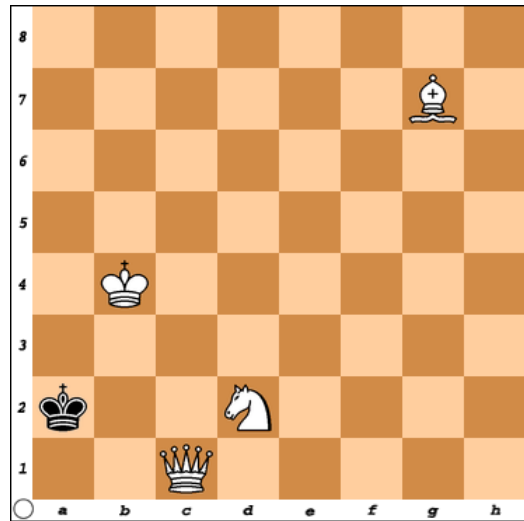
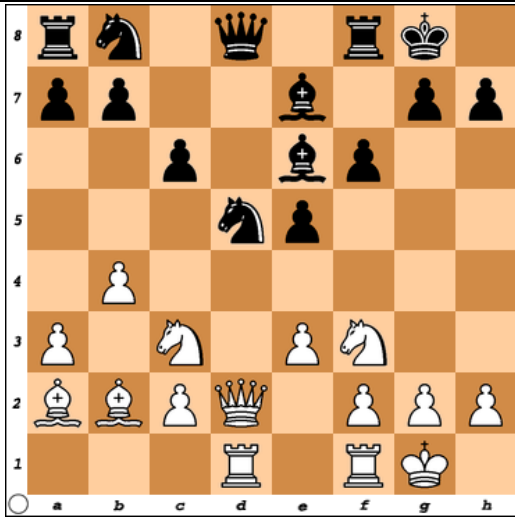
2) How many of Blacks pieces and pawns are defending the Black Knight? _____

3) Would it be profitable for White to capture the Black Knight? _____

4) How many different ways can White possibly checkmate Black? _____

5) Write each answer below using chess notation.

Whites move

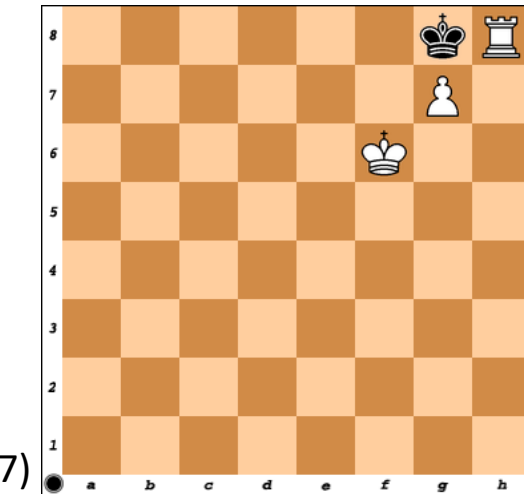


Mating Patterns. Name the mate

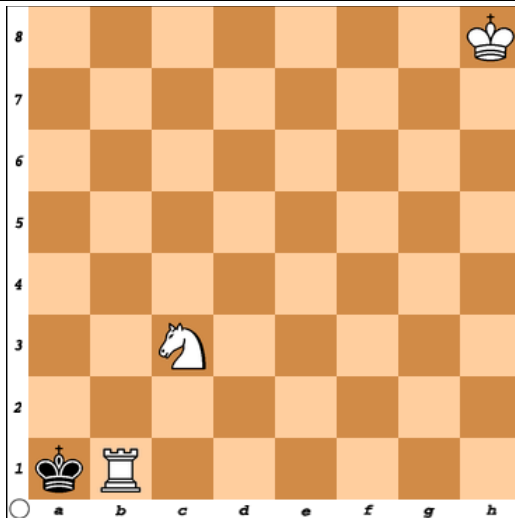
6) _____

7) _____

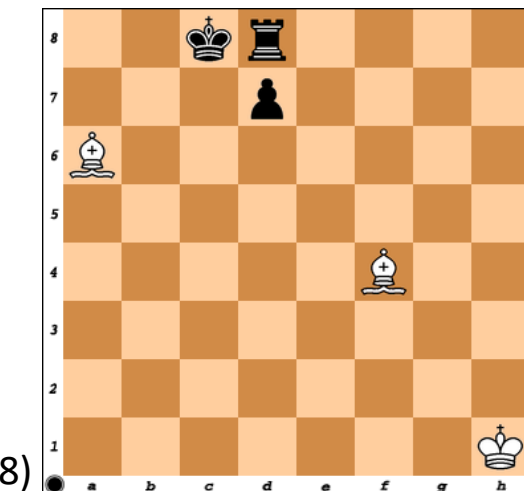
8) _____



7)



6)



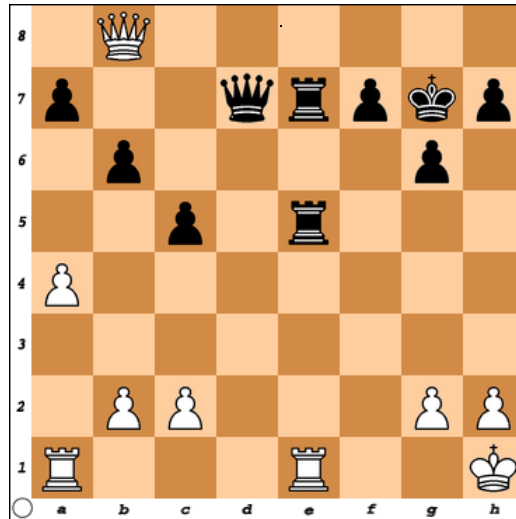
8)

Phase One – 10 Question Quiz

9) Find the twofold attack

Profit= _____

Whites move



10) Blacks move; Circle: A, B, C, or D

A) Check

B) Checkmate

C) Stalemate

D) None of the Above

