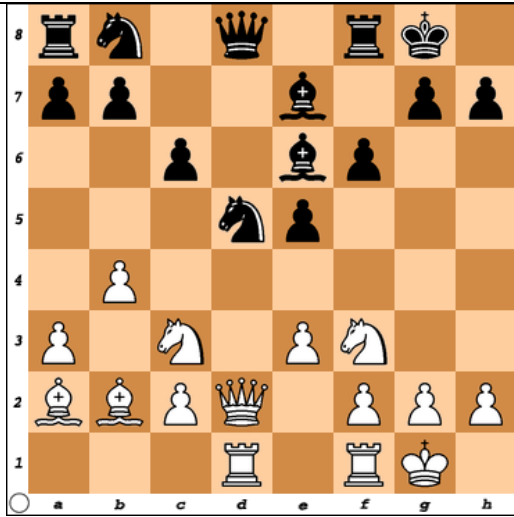


# Phase One – 10 Question Quiz

1) How many of Whites pieces are attacking the Black Knight on d5? 4

2) How many of Blacks pieces and pawns are defending the Black Knight? 3

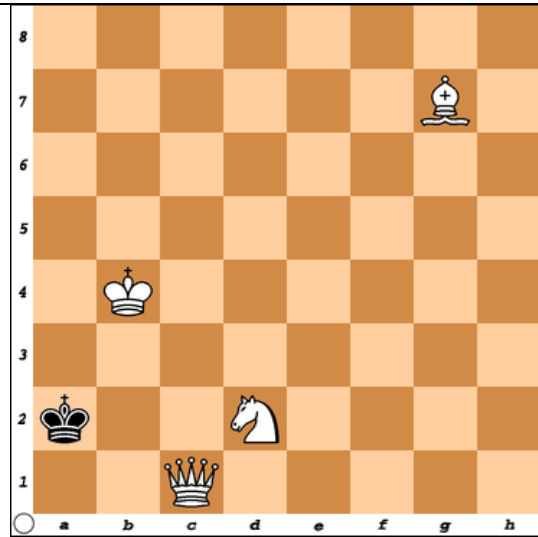
3) Would it be profitable for White to capture the Black Knight? Yes



4) How many different ways can White possibly checkmate Black? 6

5) Write each answer using chess notation  
Qb1#, Qa1#, Qb2#, Qc2#, Qc4#, Qa3#

Whites move

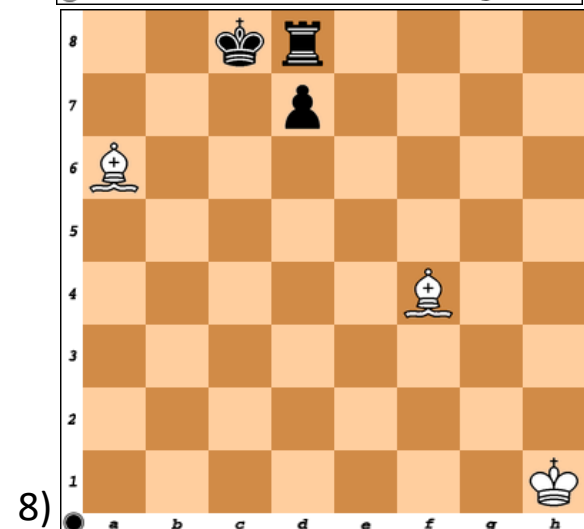
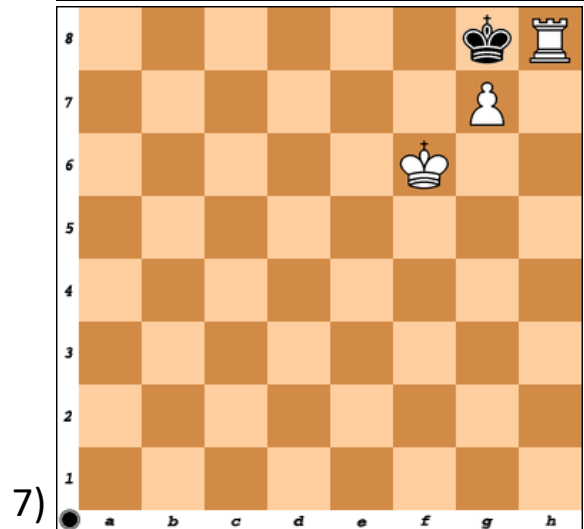
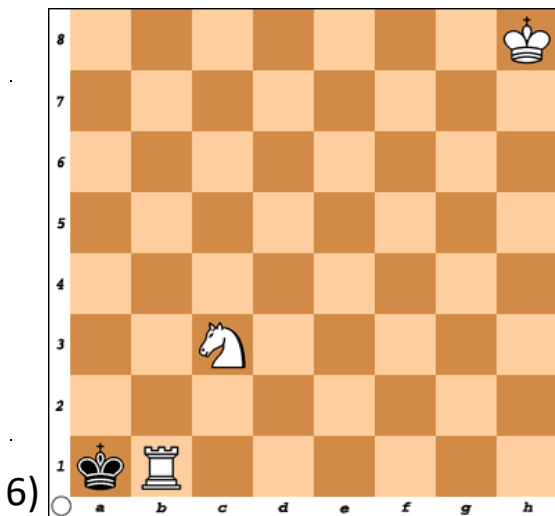


Mating Patterns. Name the mate

6) Arabian Mate

7) Anderssen's Mate

8) Boden's Mate



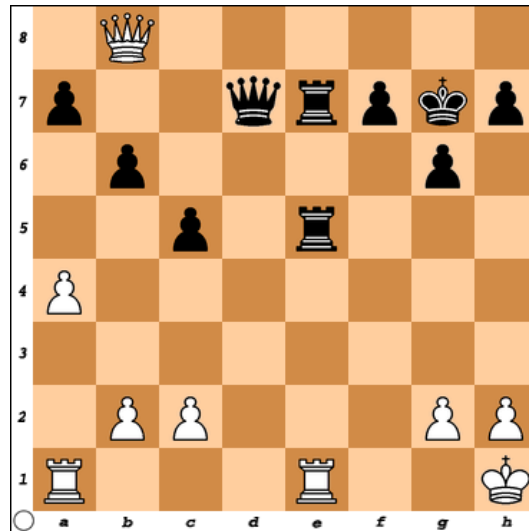
## Phase One – 10 Question Quiz

9) Find the twofold attack

\_Re1xRe5\_\_\_\_\_

Profit= \_5\_\_\_\_\_

Whites move



10) Blacks move; Circle: A, B, C, or D

A) ) Check

**B) Checkmate**

C) Stalemate

D) None of the Above

